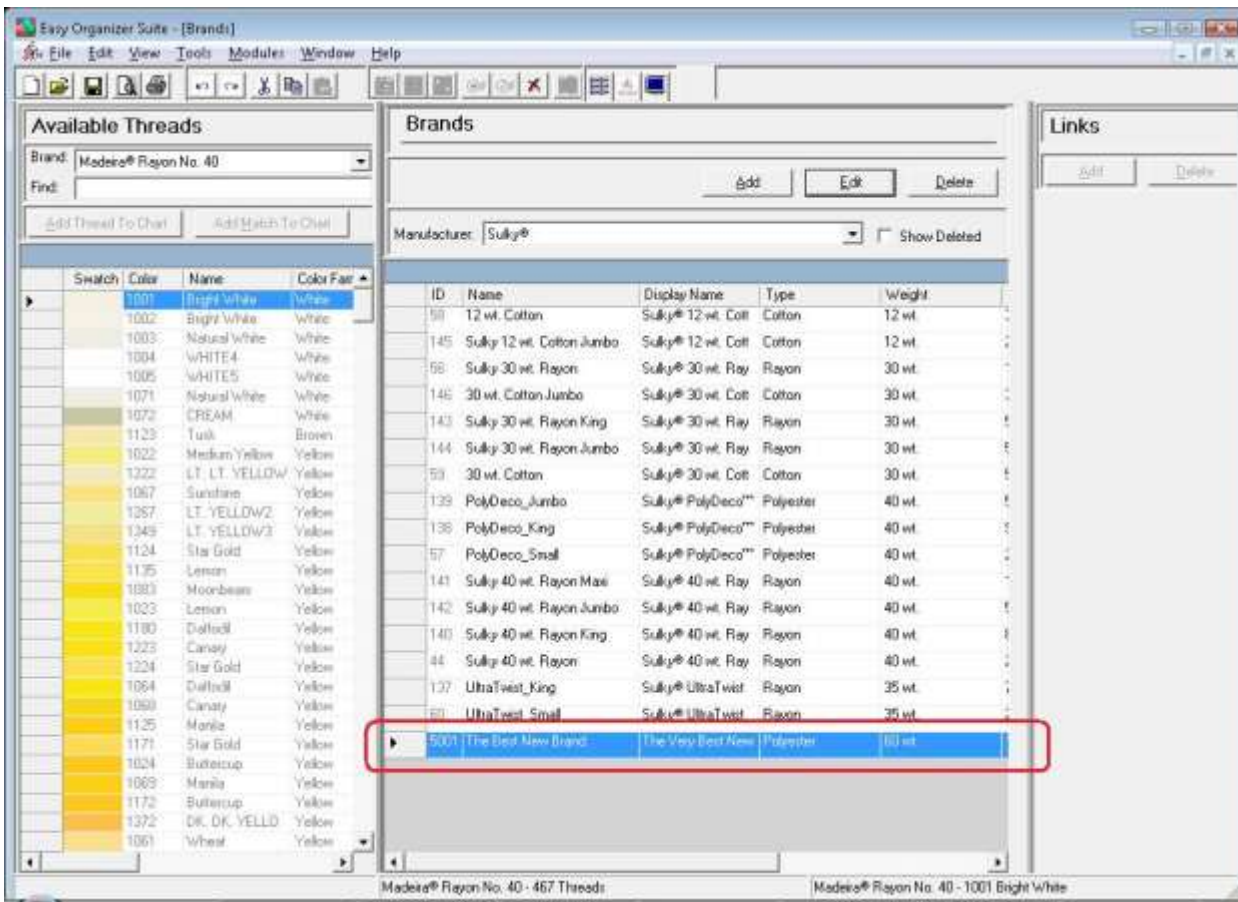
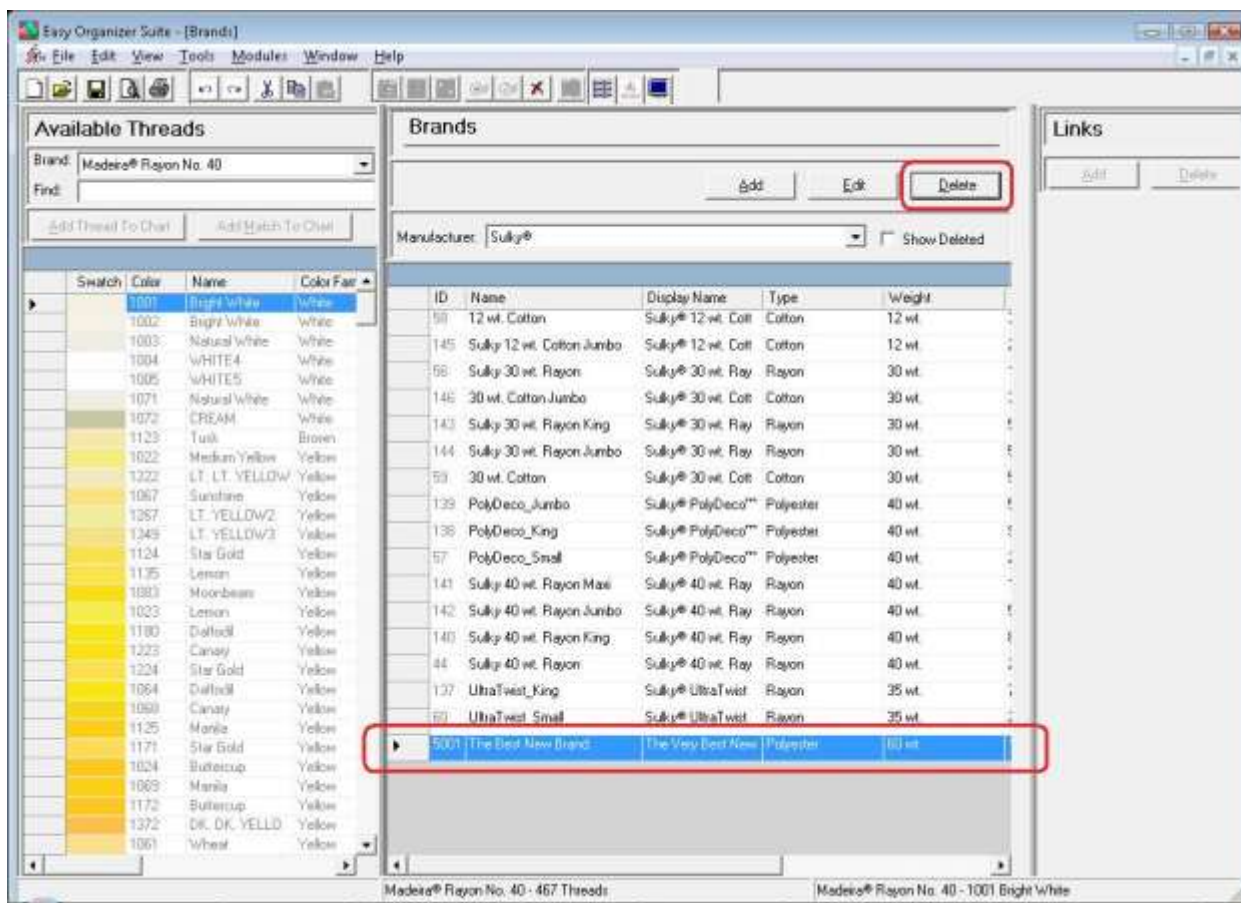


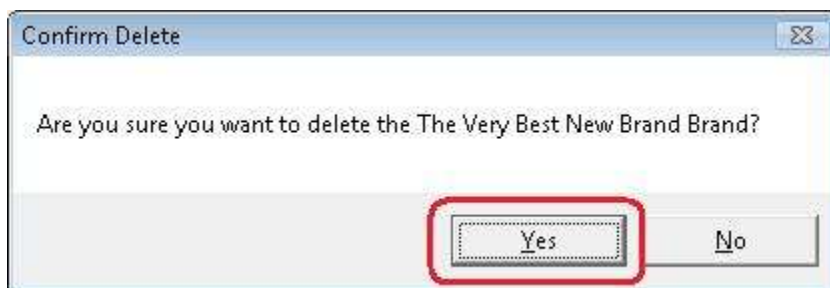
12. You will now see the brand with the changed information.



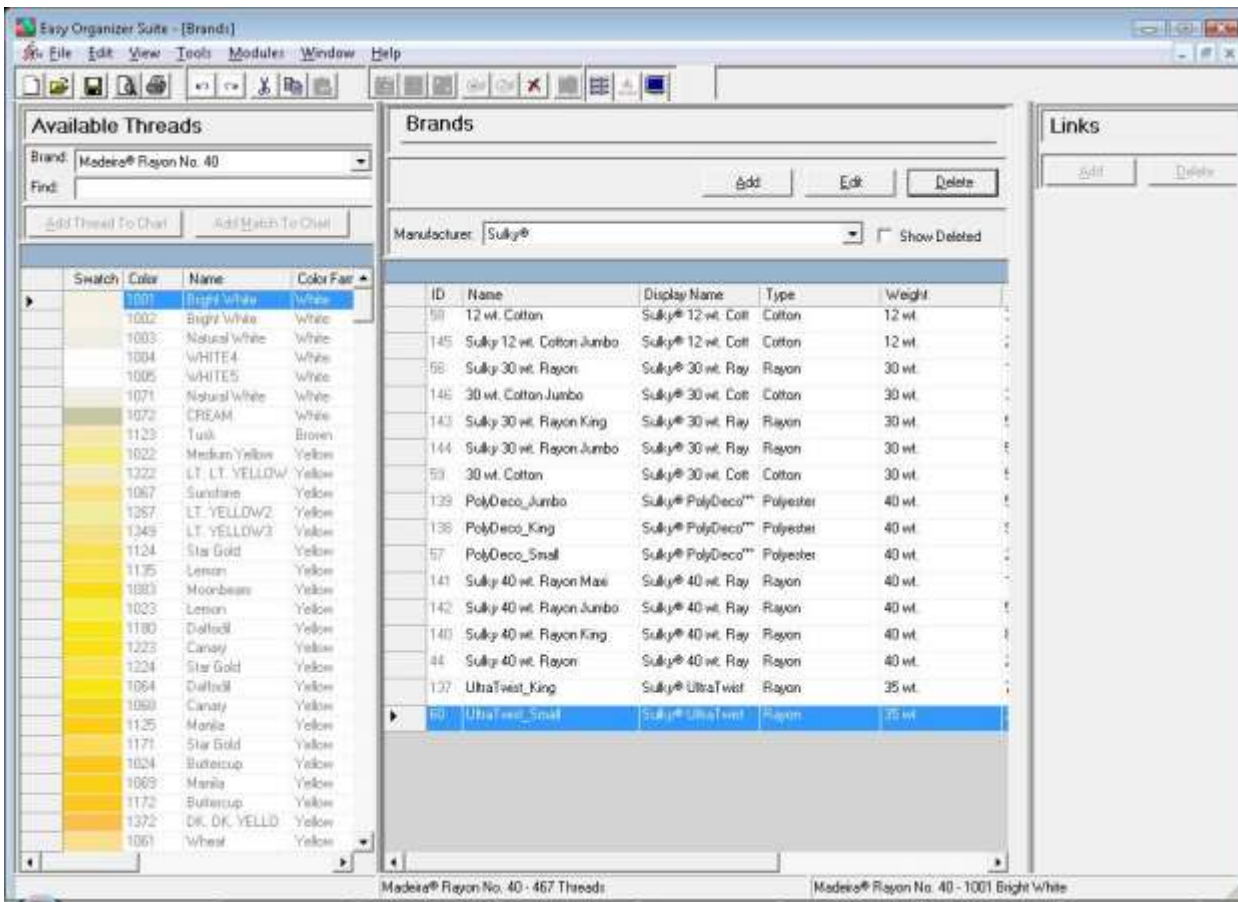
13. You can delete a brand by selecting the brand and then clicking on the Delete button. Let's delete our new brand. Select The Very Best New Manufacturer row and click on the Delete button.



14. The system will ask if you are sure. Click on the Yes button to delete the brand, or click on the No button to cancel the delete. For this lesson, click on the Yes button.



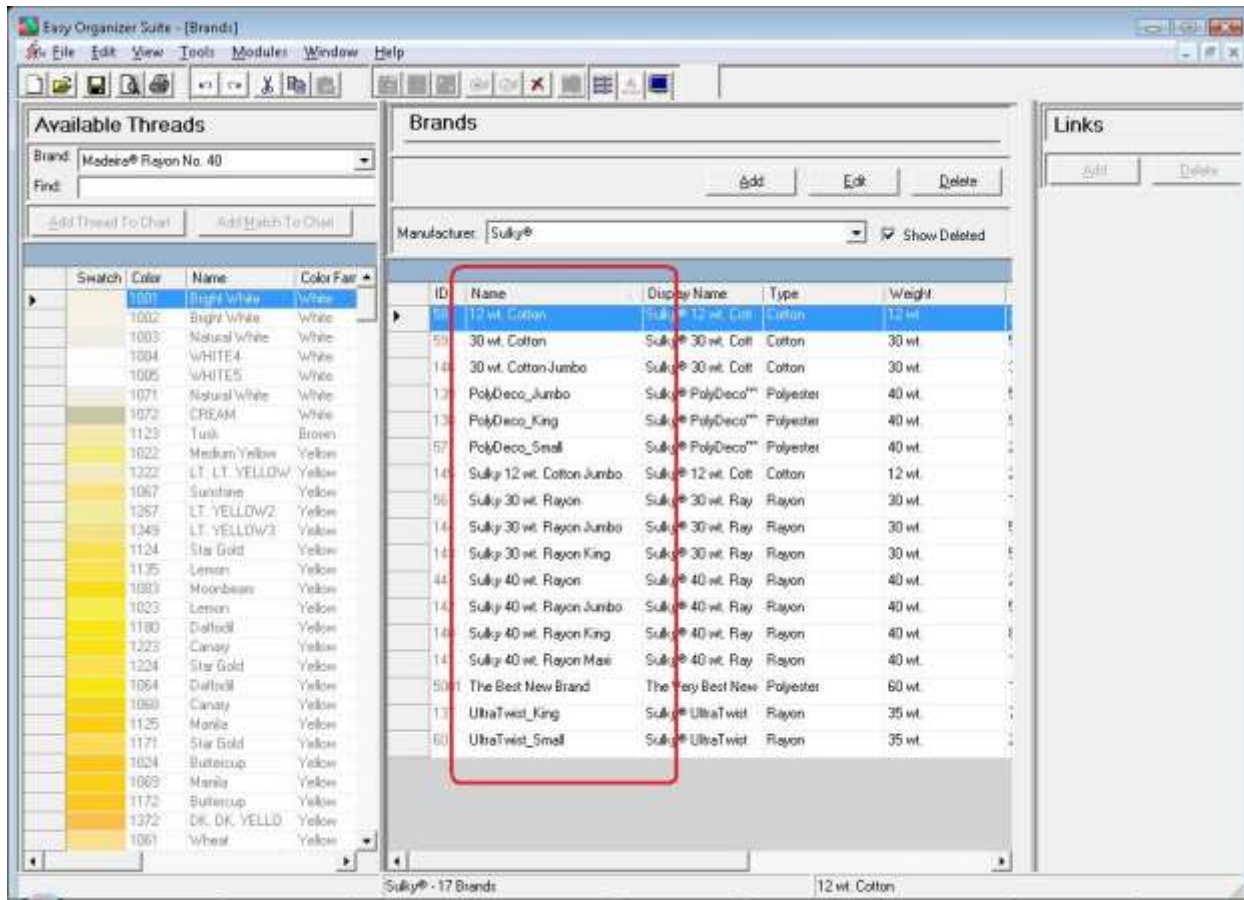
15. The brand will no longer be visible in the Brands System Table.



16. To filter the list of brands that are displayed, you can check the Show Deleted checkbox. This will show the deleted brands. You can now see the new brand that we just deleted, with the Deleted checkbox checked.

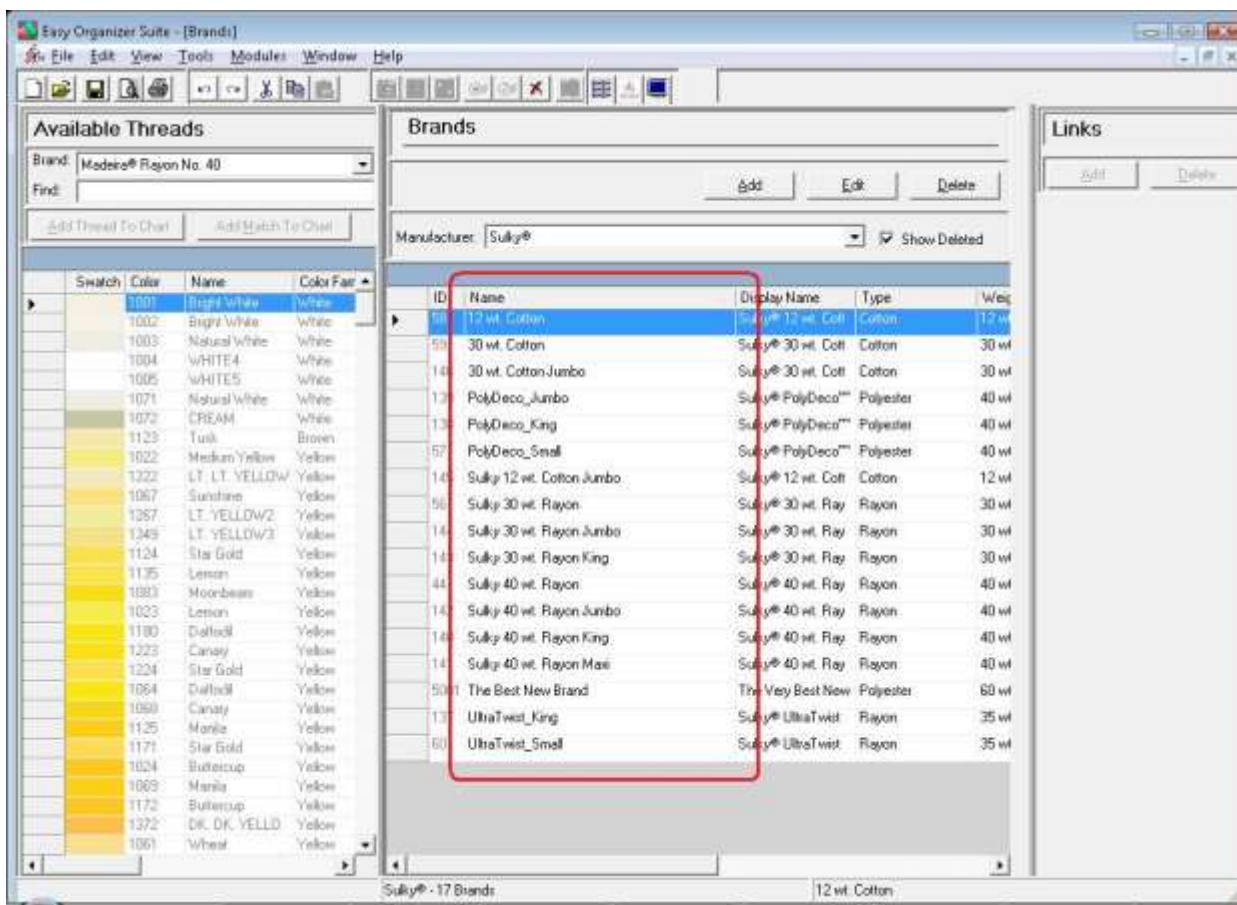


17. In any chart, including the Brands System Table Chart, you can sort the grid by clicking on the column heading. So, if you want to sort the grid by the Name column in ascending order, click on the Name column heading. If you click it again, the program will sort the grid in descending order.

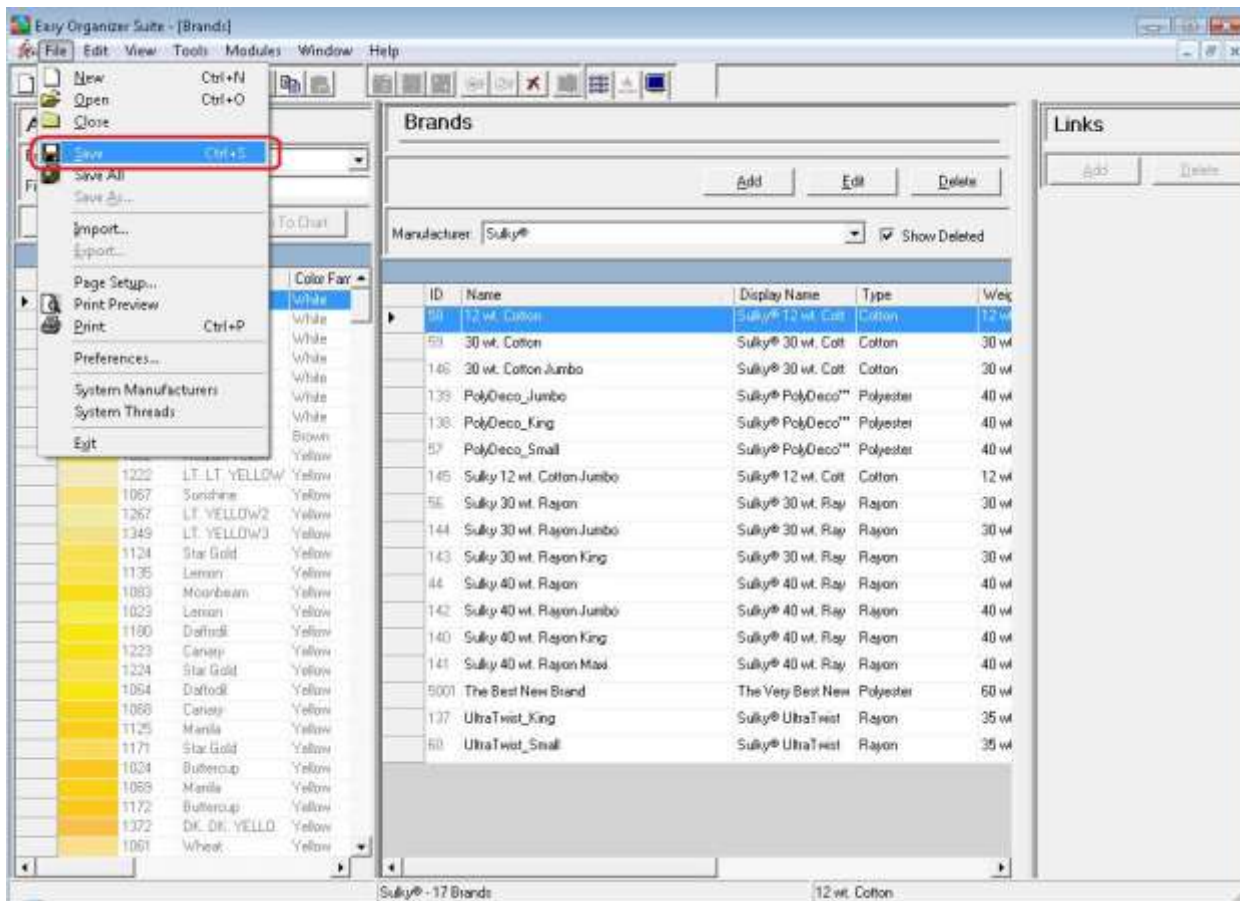


- To resize the columns of a grid, hover the mouse over end of the column you would like to resize until the mouse becomes a resize cursor. Then click and drag the column either to the left to make the column smaller or to the right to make the column larger. When the column is the size you want, let go of the mouse button to accept the new size of the column.

When you save the changes, the program will remember the size you have made the columns.



19. Be sure to save the Brands System Table Chart. Select File → Save or click on the Save icon in the toolbar.



Congratulations! You have finished Lesson 13. You are now ready to move on to Lesson 14 – How to Work with the Thread Sets System Table.