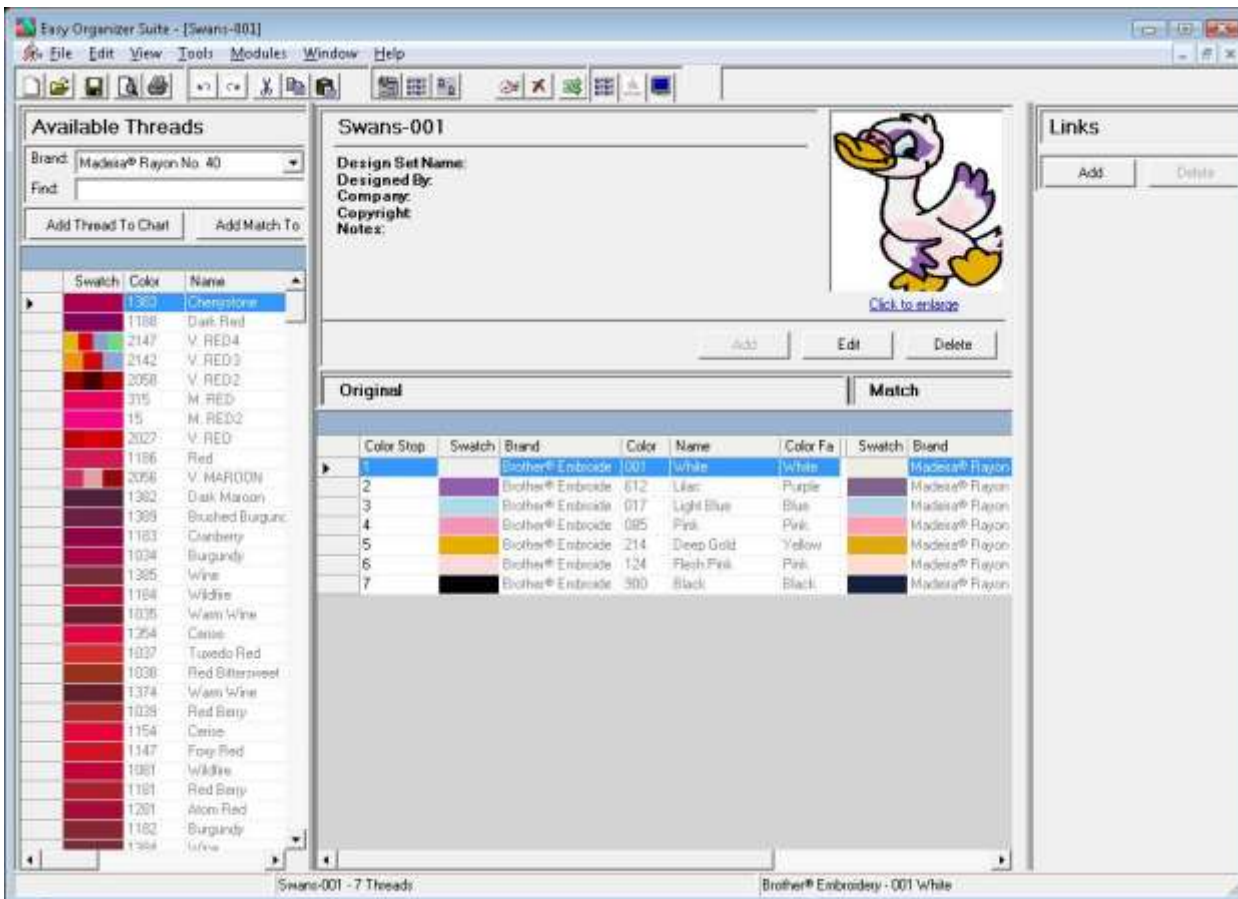


8. The system will now import the embroidery design. It will let you know as it is importing each thread.



- When the Import Wizard has completed, it will close and you will see the Design Chart, with a picture of the embroidery design, the threads of the design and the matching threads.

You can now save the Design Chart and print it out to begin stitching.



Congratulations! You have finished Lesson 20. You are now ready to move on to Lesson 21 – How to Import My Inventory.