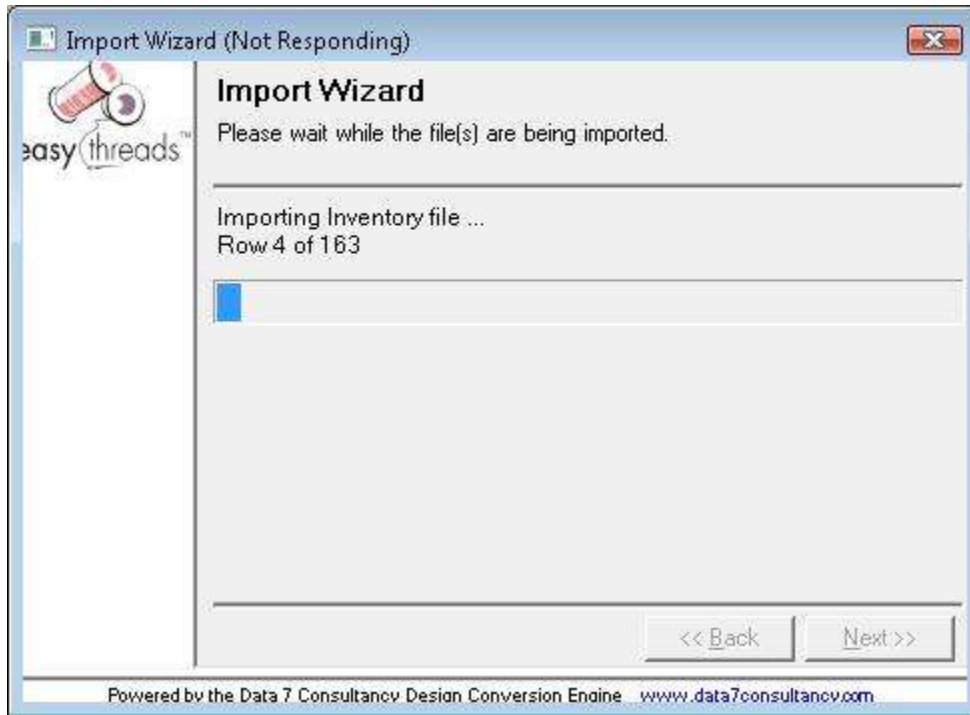
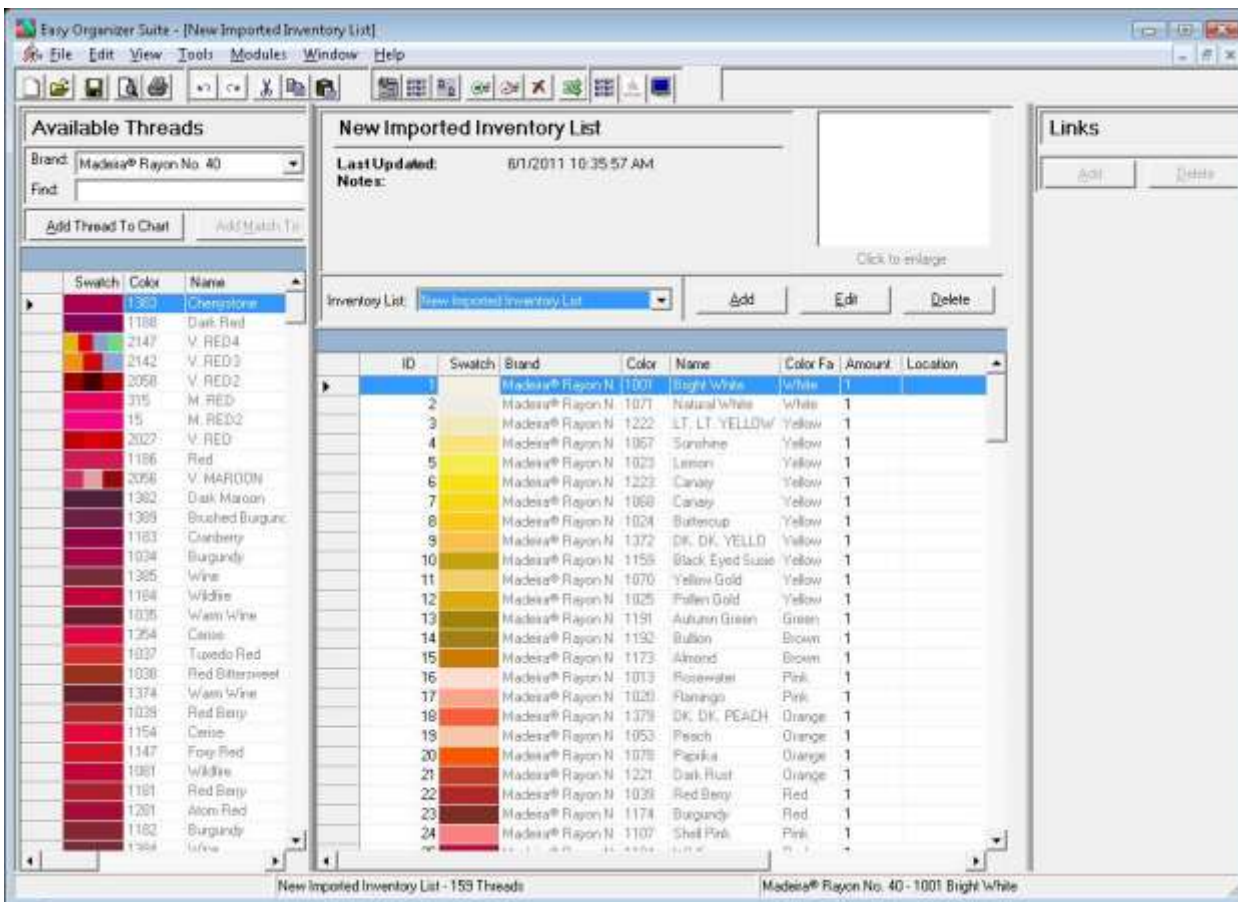


8. The system will now import the Inventory file. It will let you know as it is importing each row.



- When the Import Wizard has completed, it will close. You can now open My Inventory to see the new Inventory List, by selecting View → My Inventory. Click on the Inventory List drop down to select the new Inventory List called “New Imported Inventory List”.



Congratulations! You have finished Lesson 21. You are now ready to move on to Lesson 22 – How to Import My Favorites.