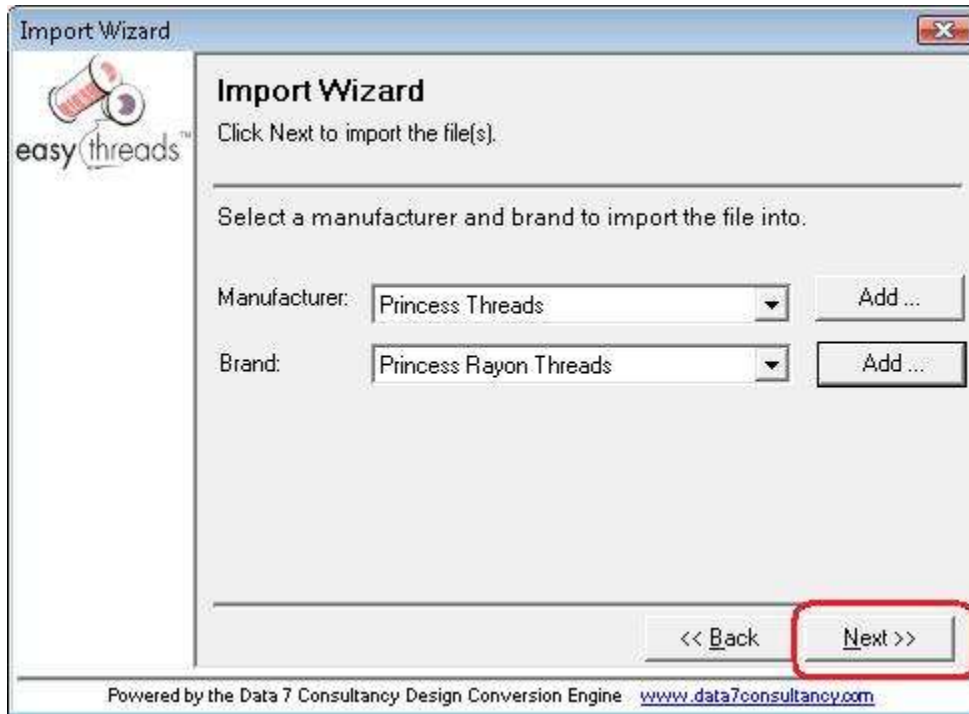
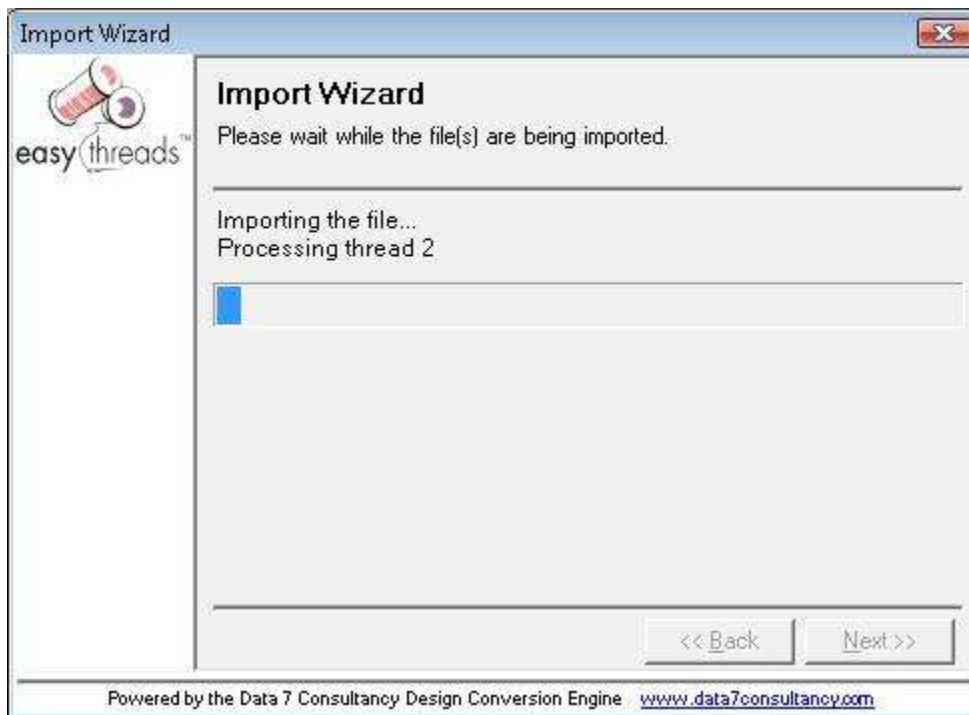


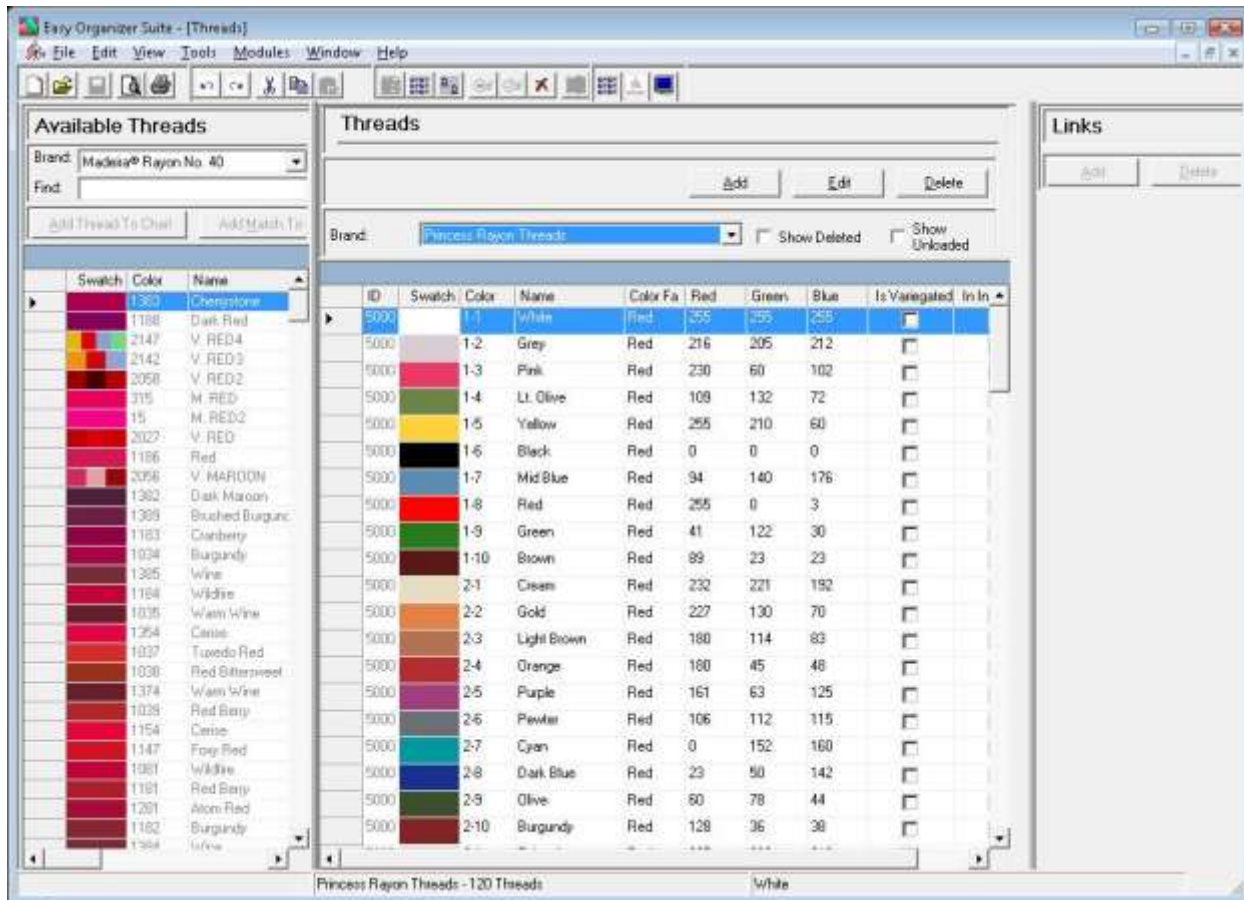
11. Click on the Next>> button to continue to the next step.



12. The system will now import the System Threads file. It will let you know as it is importing each thread.



13. When the Import Wizard has completed, it will close. You can now open System Threads to see the new brand with its threads, by selecting Tools → System Tables → Threads. Click on the Brands dropdown and select your new brand to see the threads.



Congratulations! You have finished Lesson 23. You are now ready to move on to Lesson 24 – How to Import a Design Chart.