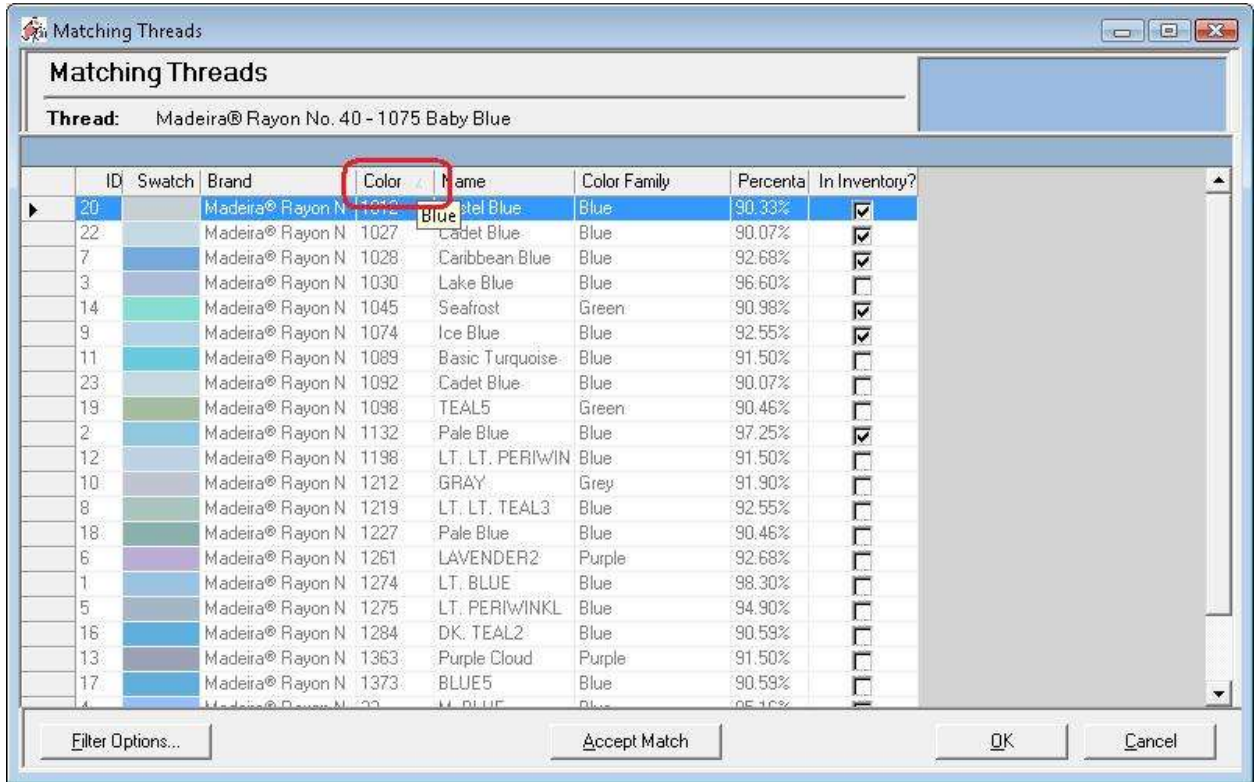
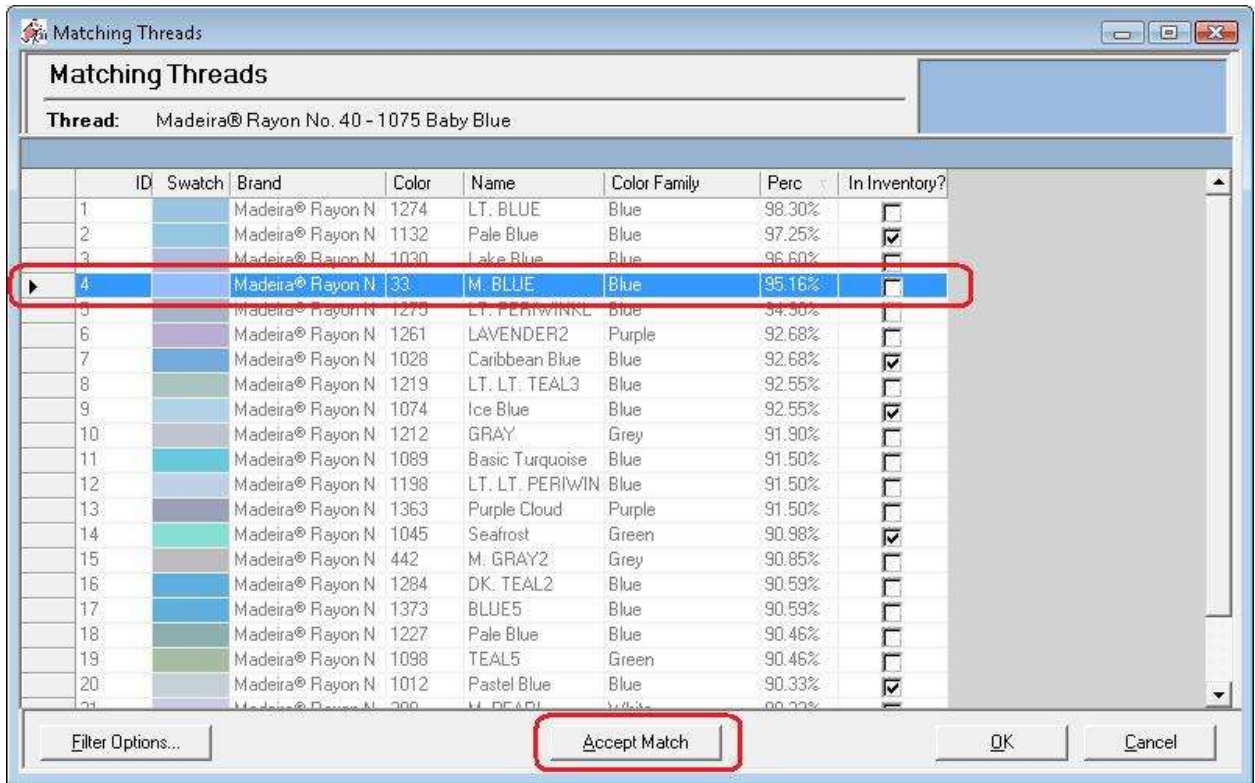


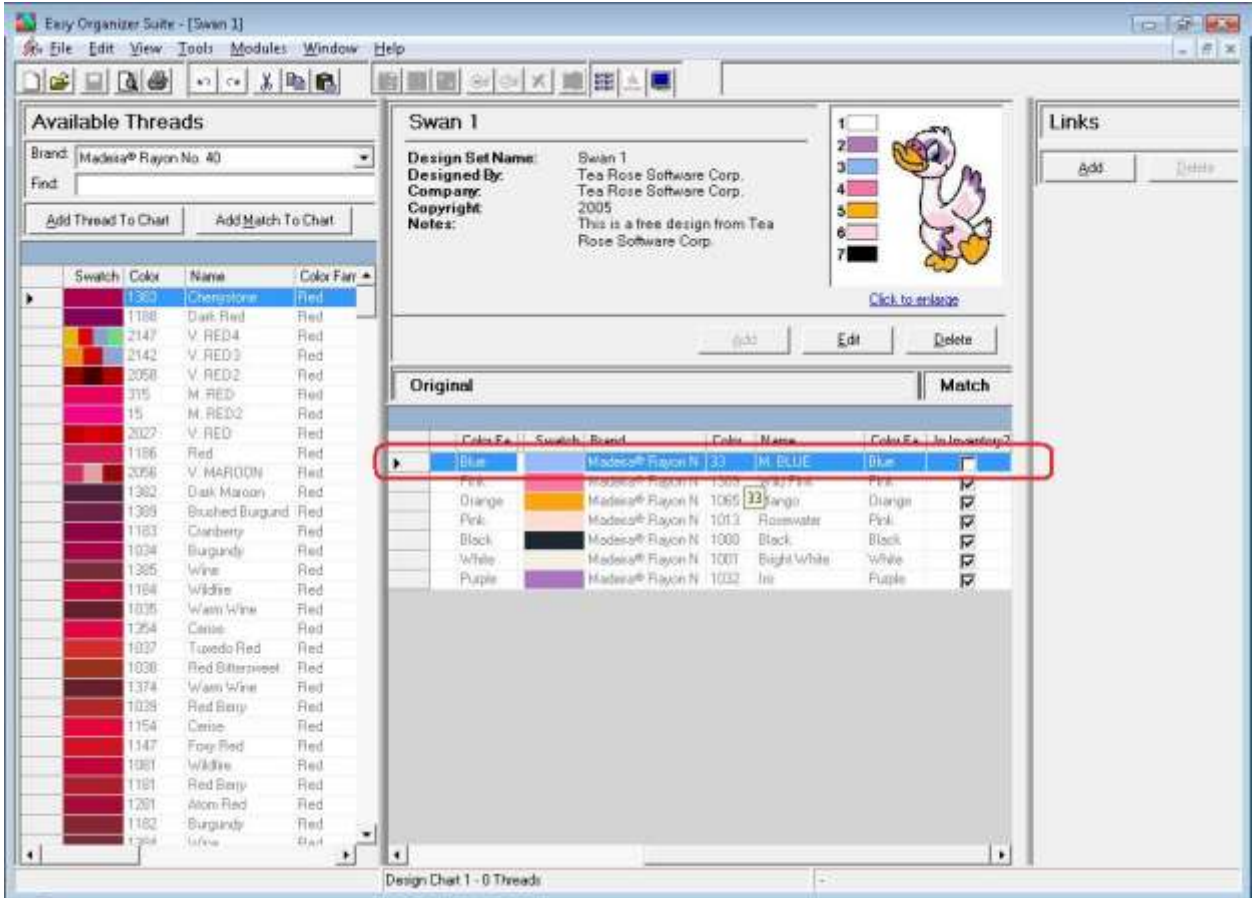
11. In any chart, including the Show Matches Chart, you can sort the grid by clicking on the column heading. So, if you want to sort the grid by the Color column in ascending order, click on the Color column heading. If you click it again, the program will sort the grid in descending order.



12. To accept the selected thread as a match in the Design Chart, you can either double click on the row or click on the Accept Match button.

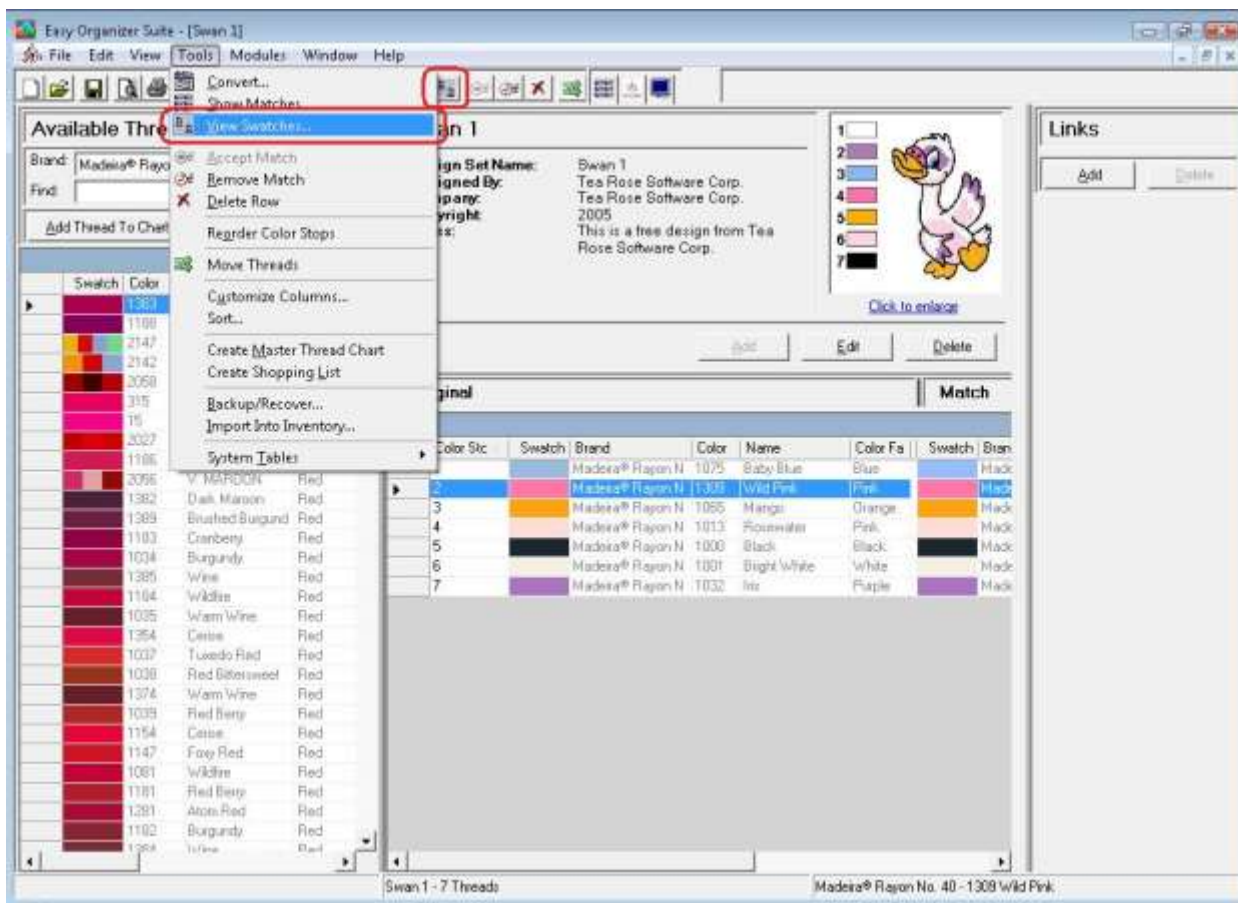


13. You will now see the selected thread in the matching columns of your Design Chart.

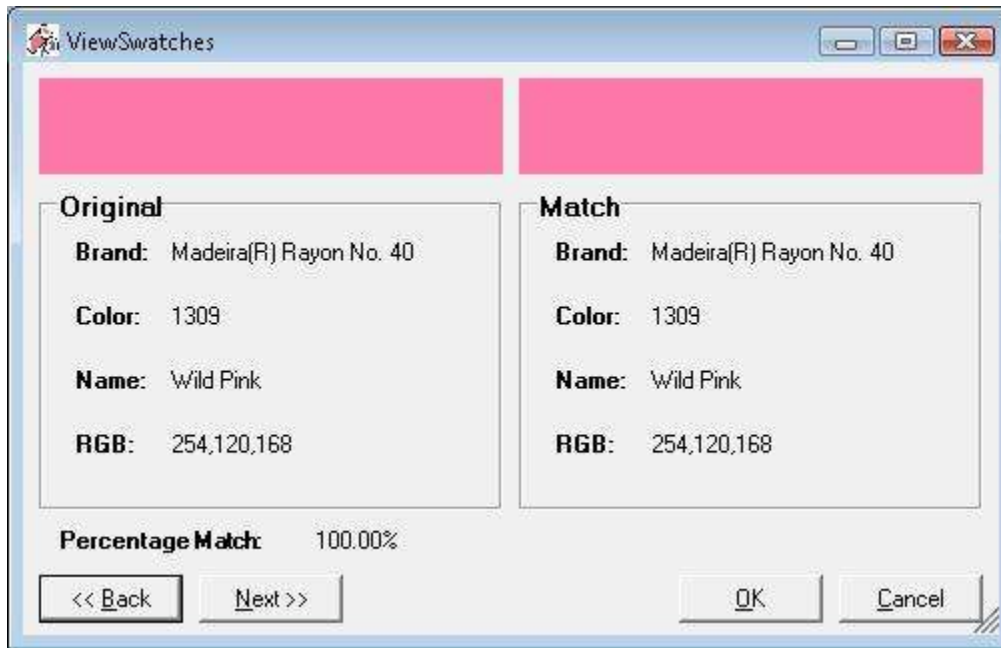


## View Swatches

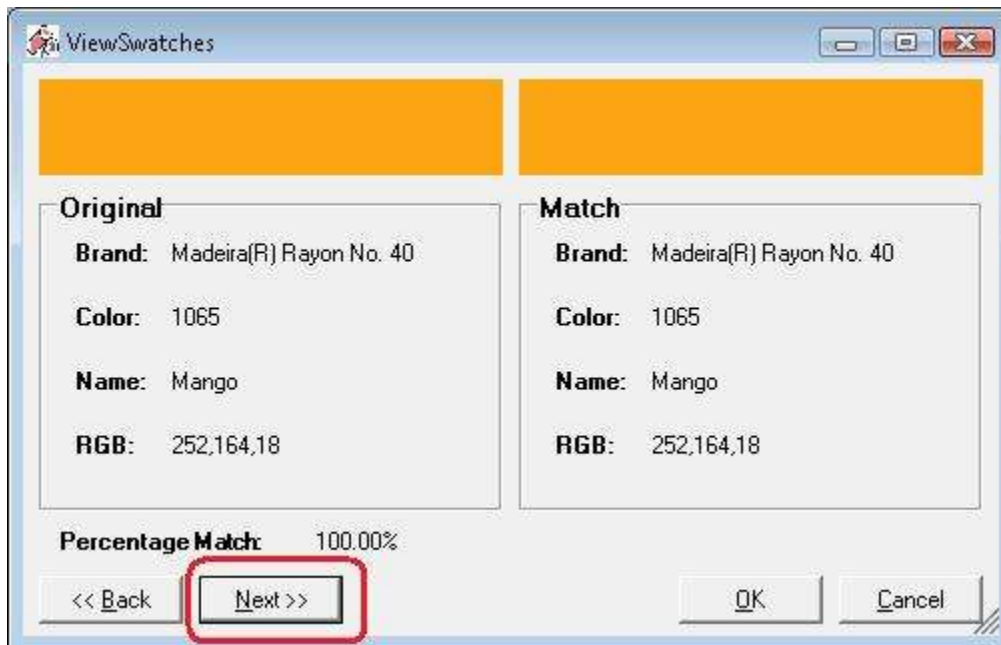
- To open the View Swatches form, first select the row that you would like to view the swatches of. Then select Tools → View Swatches from the menu, or click on the View Swatches icon in the toolbar, or right click in the Design Chart grid and select View Swatches from the context menu.



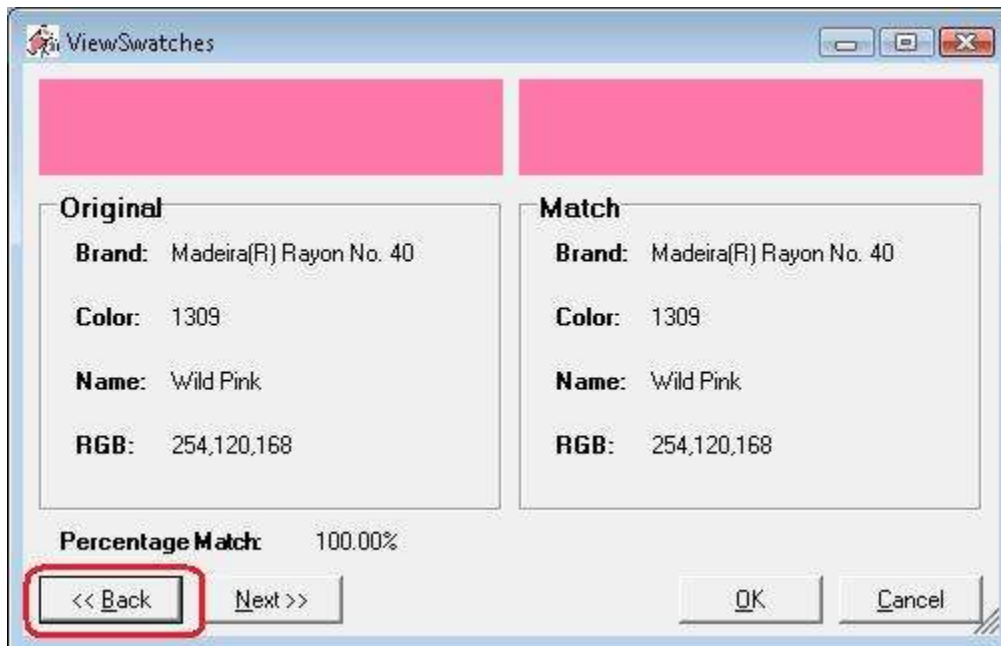
15. The View Swatches form will open. You can see that the swatches of both the Original and the Match threads are displayed. You can also see the information about the threads, and the percentage match.



16. Click on the Next >> buttons to see the swatches for the next thread in the Design Chart.



17. Click on the <<Back button to see the swatches for the previous thread in the Design Chart.



18. To close the form, click on the OK or Cancel buttons, or click on the red X in the top right corner of the View Swatches form.



Congratulations! You have finished Lesson 6. You are now ready to move on to Lesson 7 – How to Use the Create Master Thread Chart Feature.